

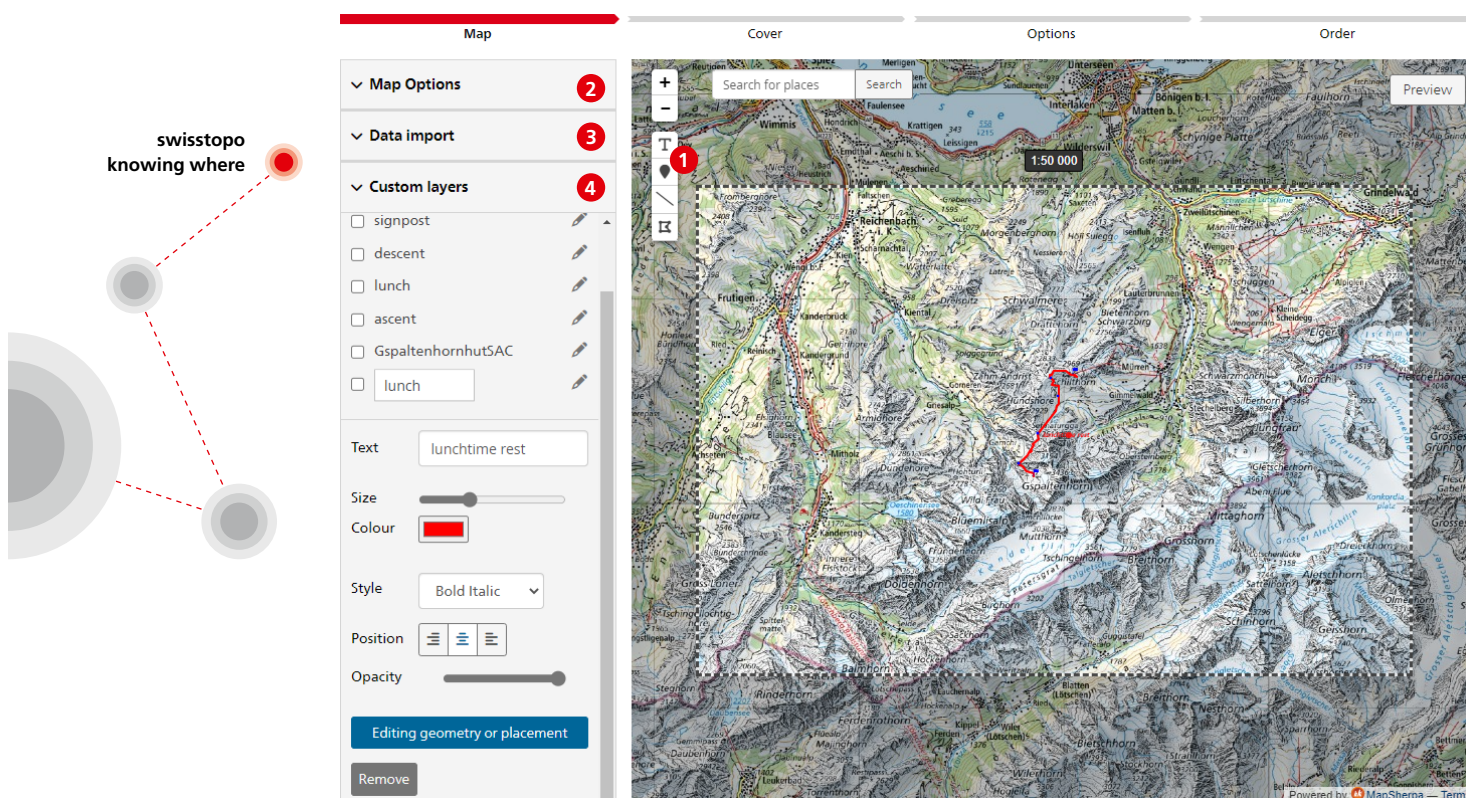
Short guide to mySwissMap

With mySwissMap, you can create your own piece of Switzerland.

This guide explains the options for customising your map.

Map

For mySwissMap, in addition to selecting the map section and desired scale, you also have the option of importing your own tours and inserting additional points, lines, areas or text.



1 Drawing tools

Objects can be inserted using the drawing tools. Thereafter, their representation can be adjusted as required using the menu on the side of your screen. When doing so, you should zoom in as far as possible. Note: Text is written in the custom layers in the menu on the left.

2 Map options

As an option for your individual map, you can not only define the map area and extent but also its orientation, whether portrait or landscape, as well as the scale of the map. Note: The scale of the map changes automatically when adjusting of the map area.

3 Data import

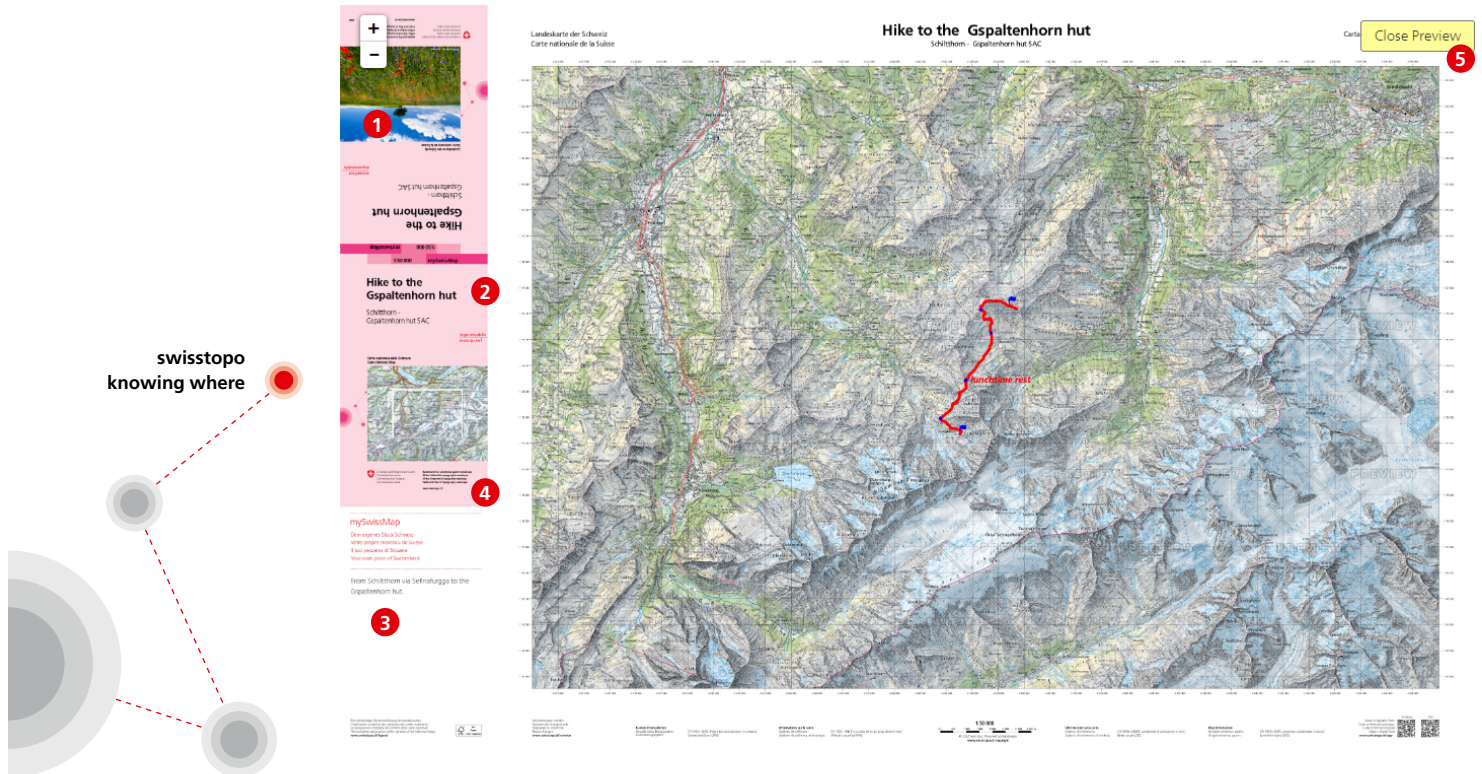
You can import a route into the map view using "Choose file". To do this, you need a GPX or KML file which cannot exceed 2 MB. Note: It is best to define the map area only after importing all routes and/or drawn objects, as the map frame automatically shifts according to the newly inserted objects.

4 User-defined layers

The display of the imported routes and inserted objects can be customised in the side menu. Note: To move objects, you must first select "Edit geometry or placement".

Cover and options

You can also make individual specifications for the elements of the mySwissMap cover. You can define the title and subtitle as well as a personal description of the map. Furthermore, you also need to choose whether you want the map folded or not.



1 Cover image

You can use your own picture as the cover image of your printed map. If you do not insert an image, a standard image will be used. Note: The image should be of sufficient resolution.

2 Title and subtitle

You are free to choose the title as well as the subtitle. Note: There is a limit of 16 characters for the title and 32 characters for the subtitle.

3 Personalised text

On the inside of the cover, you can add an individual description of the map and its contents. Note: Only what is visible in the text field will be visible on the printed map. Be sure to check in the preview!

4 Cover colour

Choose one of the eight different colours for the mySwissMap cover.

5 Preview:

Note: Before placing your final order, be sure to check the preview! In particular, check whether the map section, the scale and the inserted objects meet your expectations in terms of size and colour. Please also make sure that the individual description of the map is correctly placed and nothing is cut off. As this is a personalised product, the order cannot be cancelled once it has been placed.

